

**Worklist: 852**



<u>LAB_CASE</u>	<u>ITEM</u>	<u>TASK_ID</u>	<u>DESCRIPTION</u>	
C2015-1124	2	42221	6.1.2 Blood Cannabinoids by LC	
C2015-1574	3	42224	6.1.2 Blood Cannabinoids by LC	
M2015-2875	1	42228	6.1.2 Blood Cannabinoids by LC	
M2015-2973	1	42229	6.1.2 Blood Cannabinoids by LC	
M2015-2978	1	42230	6.1.2 Blood Cannabinoids by LC	
M2015-3006	1	42232	6.1.2 Blood Cannabinoids by LC	
M2015-3025	3	42234	6.1.2 Blood Cannabinoids by LC	
P2015-1917	1	42241	6.1.2 Blood Cannabinoids by LC	
P2015-1926	1	42242	6.1.2 Blood Cannabinoids by LC	
P2015-1927	1	42243	6.1.2 Blood Cannabinoids by LC	
P2015-1928	1	42244	6.1.2 Blood Cannabinoids by LC	
P2015-1948	1	42246	6.1.2 Blood Cannabinoids by LC	
P2015-1992	1	42247	6.1.2 Blood Cannabinoids by LC	

reviewed by B. Wylie 10-2-15

# Worklist Report



Worklist Path: C:\MassHunter\ISP Methods\worklists\DD-B-CANN092515.wkl  
 Date Modified: 09/25/2015 04:37:49 PM  
 Date Printed: 09/25/2015 04:45:08 PM

## Worklist Run Parameters

Verified that ALS vials were in the correct rack positions on 09/25/15.

Operator Name: 62340  
 Run Type: Standard Start  
 Part of Method to Run: Acquisition Only  
 Execution for Acquisition-DA: Synchronous  
 Acquisition Method Path: C:\MassHunter\ISP Methods\Acquisition\Benzos\_Z\_Drugs\_ACN\_FA\_ISP.m  
 A Method Path: D:\MassHunter\methods  
 Data File Path: C:\MassHunter\Data\CANN\CANN-092515  
 Pre-Worklist Script: ---  
 Post-Worklist Script: SCP\_InstrumentStandby(){MH\_Acq\_Scripts.exe}  
 Acquisition Clean Up Script: SCP\_InstrumentStandby(){MH\_Acq\_Scripts.exe}  
 Overlapped Injection: No  
 Lear sample selection after run: Yes  
 Wait Time for Ready(Min): 10  
 Threshold Disk Value(GB): 10  
 Comment: ---

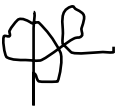
## Plate Barcode Information

Plate	Barcode
P1	
P2	

## Worklist Table

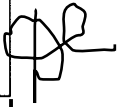
Sample Position	Sample Name	Method	Data File	Sample Type	Level Name	Comment	Info.
P1-A1	Blank	C:\MassHunter\ISP Methods\Acquisition\isp blood cannabinoids.m	Blank1-r001.d	Blank			
P1-A1	Blank	C:\MassHunter\ISP Methods\Acquisition\isp blood cannabinoids.m	Blank2-r001.d	Blank			
P1-A2	Blood: 1_5 ng/mL	C:\MassHunter\ISP Methods\Acquisition\isp blood cannabinoids.m	B_CAL1-r001.d	Calibration	1		c-THC @5ng/mL, all others @1 ng/mL
P1-A3	Blood: 2_10 ng/mL	C:\MassHunter\ISP Methods\Acquisition\isp blood cannabinoids.m	B_CAL2_r001.d	Calibration	2		c-THC @10ng/mL, all others @2 ng/mL
P1-A4	Blood: 5_25 ng/mL	C:\MassHunter\ISP Methods\Acquisition\isp blood cannabinoids.m	B_CAL3_r001.d	Calibration	3		c-THC @25ng/mL, all others @5 ng/mL
P1-A5			B_CAL4_r001.d	Calibration	4		

Position	Sample Name	Method	Data File	Type	Name	Comment	Info.
	Blood: 10_50 ng/mL	C:\MassHunter\ISP Methods\Acquisition\isp blood cannabinoids.m					c-THC @50ng/mL, all others @10 ng/mL
21-A6	Blood: 25_125 ng/mL	C:\MassHunter\ISP Methods\Acquisition\isp blood cannabinoids.m	B_CAL5_r001.d	Calibration	5		c-THC @125ng/mL, all others @25 ng/mL
21-A7	Blood: 50_250 ng/mL	C:\MassHunter\ISP Methods\Acquisition\isp blood cannabinoids.m	B_CAL6_r001.d	Calibration	6		c-THC @250ng/mL, all others @50 ng/mL
21-A8	Blood: 100_500 ng/mL	C:\MassHunter\ISP Methods\Acquisition\isp blood cannabinoids.m	B_CAL7_r001.d	Calibration	7		c-THC @500ng/mL, all others @100 ng/mL
21-A1	Blank	C:\MassHunter\ISP Methods\Acquisition\isp blood cannabinoids.m	Carryover blank1_r001.d	Blank			
21-A9	Blood Negative Control	C:\MassHunter\ISP Methods\Acquisition\isp blood cannabinoids.m	B-NC-r001.d	Sample			Negative Blood UTAK Lot B0689
21-B1	Blood 3_15ng/mL	C:\MassHunter\ISP Methods\Acquisition\isp blood cannabinoids.m	B-3_15-r001.d	Sample			c-THC @15ng/mL, all others @3 ng/mL
21-A9	Blank C2015-1124-2	C:\MassHunter\ISP Methods\Acquisition\isp blood cannabinoids.m	C2015-1124-2_BLK_r001.d	Blank			
21-B2	C2015-1124-2	C:\MassHunter\ISP Methods\Acquisition\isp blood cannabinoids.m	C2015-1124-2-r001.d	Sample			Blood
21-A9	Blank C2015-1574-3	C:\MassHunter\ISP Methods\Acquisition\isp blood cannabinoids.m	C2015-1574-3_BLK_r001.d	Blank			
21-B3	C2015-1574-3	C:\MassHunter\ISP Methods\Acquisition\isp blood cannabinoids.m	C2015-1574-3-r001.d	Sample			Blood
21-A9	Blank M2015-2875-1	C:\MassHunter\ISP Methods\Acquisition\isp blood cannabinoids.m	M2015-2875-1_BLK_r001.d	Blank			
21-B4	M2015-2875-1	C:\MassHunter\ISP Methods\Acquisition\isp blood cannabinoids.m	M2015-2875-1-r001.d	Sample			Blood
21-A9	Blank M2015-2973-1	C:\MassHunter\ISP Methods\Acquisition\isp blood cannabinoids.m	M2015-2973-1_BLK_r001.d	Blank			
21-B5	M2015-2973-1	C:\MassHunter\ISP Methods\Acquisition\isp blood cannabinoids.m	M2015-2973-1-r001.d	Sample			Blood
21-A9	Blank M2015-2978-1	C:\MassHunter\ISP Methods\Acquisition\isp blood cannabinoids.m	M2015-2978-1_BLK_r001.d	Blank			
21-B6	M2015-2978-1	C:\MassHunter\ISP Methods\Acquisition\isp blood cannabinoids.m	M2015-2978-1-r001.d	Sample			Blood
21-A9				Blank			

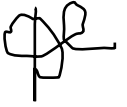


Position	Name	Method	Data File	Type	Name	Comment	Info.
	Blank M2015-3006-1	C:\MassHunter\ISP Methods\Acquisition\isp blood cannabinoids.m	M2015-3006-1_BLK_r001.d				
21-B7	M2015-3006-1	C:\MassHunter\ISP Methods\Acquisition\isp blood cannabinoids.m	M2015-3006-1-r001.d	Sample			Blood
21-A9	Blank M2015-3025-3	C:\MassHunter\ISP Methods\Acquisition\isp blood cannabinoids.m	M2015-3025-3_BLK_r001.d	Blank			
21-B8	M2015-3025-3	C:\MassHunter\ISP Methods\Acquisition\isp blood cannabinoids.m	M2015-3025-3-r001.d	Sample			Blood
21-A9	Blank P2015-1917-1	C:\MassHunter\ISP Methods\Acquisition\isp blood cannabinoids.m	P2015-1917-1_BLK_r001.d	Blank			
21-B9	P2015-1917-1	C:\MassHunter\ISP Methods\Acquisition\isp blood cannabinoids.m	P2015-1917-1-r001.d	Sample			Blood
21-A9	Blank P2015-1926-1	C:\MassHunter\ISP Methods\Acquisition\isp blood cannabinoids.m	P2015-1926-1_BLK_r001.d	Blank			
21-C1	P2015-1926-1	C:\MassHunter\ISP Methods\Acquisition\isp blood cannabinoids.m	P2015-1926-1-r001.d	Sample			Blood
21-A9	Blank P2015-1927-1	C:\MassHunter\ISP Methods\Acquisition\isp blood cannabinoids.m	P2015-1927-1_BLK_r001.d	Blank			
21-C2	P2015-1927-1	C:\MassHunter\ISP Methods\Acquisition\isp blood cannabinoids.m	P2015-1927-1-r001.d	Sample			Blood
21-A1	Blank	C:\MassHunter\ISP Methods\Acquisition\isp blood cannabinoids.m	Carryover blank2_r001.d	Blank			
21-C3	Blood 25_125ng/mL	C:\MassHunter\ISP Methods\Acquisition\isp blood cannabinoids.m	B-25_125-r001.d	Sample			c-THC @125ng/mL, all others @25 ng/mL
21-A9	Blank P2015-1928-1	C:\MassHunter\ISP Methods\Acquisition\isp blood cannabinoids.m	P2015-1928-1_BLK_r001.d	Blank			
21-C4	P2015-1928-1	C:\MassHunter\ISP Methods\Acquisition\isp blood cannabinoids.m	P2015-1928-1-r001.d	Sample			Blood
21-A9	Blank P2015-1948-1	C:\MassHunter\ISP Methods\Acquisition\isp blood cannabinoids.m	P2015-1948-1_BLK_r001.d	Blank			
21-C5	P2015-1948-1	C:\MassHunter\ISP Methods\Acquisition\isp blood cannabinoids.m	P2015-1948-1-r001.d	Sample			Blood
21-A9	Blank P2015-1992-1	C:\MassHunter\ISP Methods\Acquisition\isp blood cannabinoids.m	P2015-1992-1_BLK_r001.d	Blank			
21-C6	P2015-1992-1	C:\MassHunter\ISP Methods\Acquisition\isp blood cannabinoids.m	P2015-1992-1-r001.d	Sample			Blood
21-A1	Blank		Blank3-r001.d	Blank			

Position	Name	Method	Data File	Type	Name	Comment	Info.
		C:\MassHunter\ISP Methods\Acquisition\isp blood cannabinoids.m					
21-A1	Blank	C:\MassHunter\ISP Methods\Acquisition\isp blood cannabinoids.m	Blank4-r001.d	Blank			



# ISP Forensics Calibration Curve Report

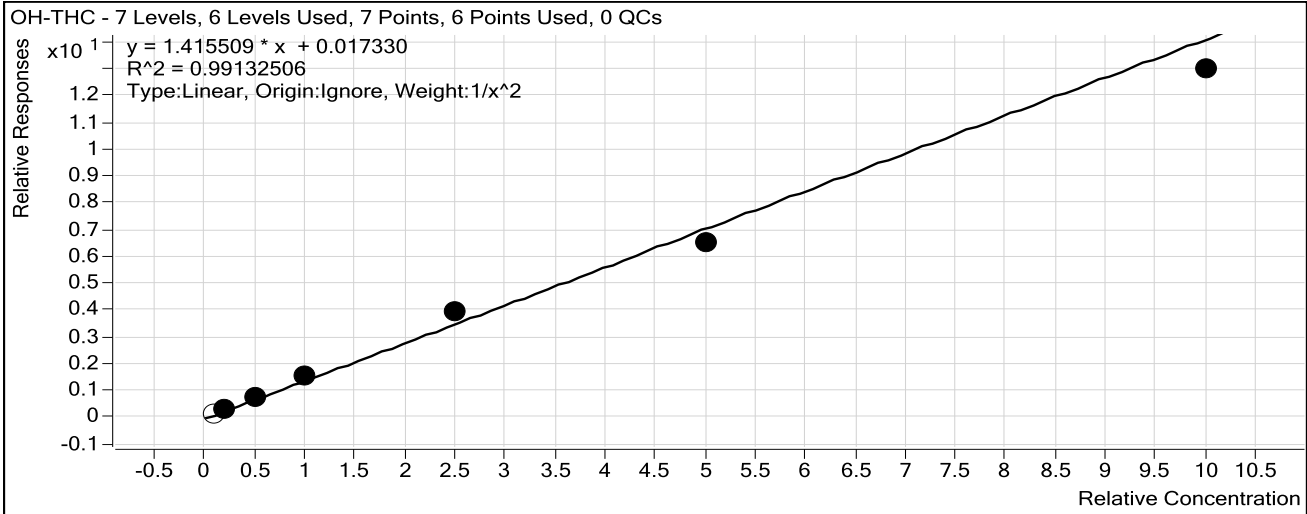


**Batch Data Path** C:\MassHunter\Data\CANN\CANN-092515-DD\QuantResults\CANN-092515-DD.batch.bin

**Last Calib Update** 10/1/2015 9:21 AM

**Analyst Name** ISP TOX

**Target Compound** OH-THC  
**Internal Standard** OH-THC-d3



Sample	Level	Enabled	Exp Conc	Final Conc	Accuracy
Blood: 1_5 ng/mL	1	<input type="checkbox"/>	1	1.0	101.1
Blood: 2_10 ng/mL	2	<input checked="" type="checkbox"/>	2	2.0	98.3
Blood: 5_25 ng/mL	3	<input checked="" type="checkbox"/>	5	5.0	99.5
Blood: 10_50 ng/mL	4	<input checked="" type="checkbox"/>	10	10.8	107.8
Blood: 25_125 ng/mL	5	<input checked="" type="checkbox"/>	25	27.6	110.6
Blood: 50_250 ng/mL	6	<input checked="" type="checkbox"/>	50	46.2	92.4
Blood: 100_500 ng/mL	7	<input checked="" type="checkbox"/>	100	91.5	91.5

# ISP Forensics Calibration Curve Report



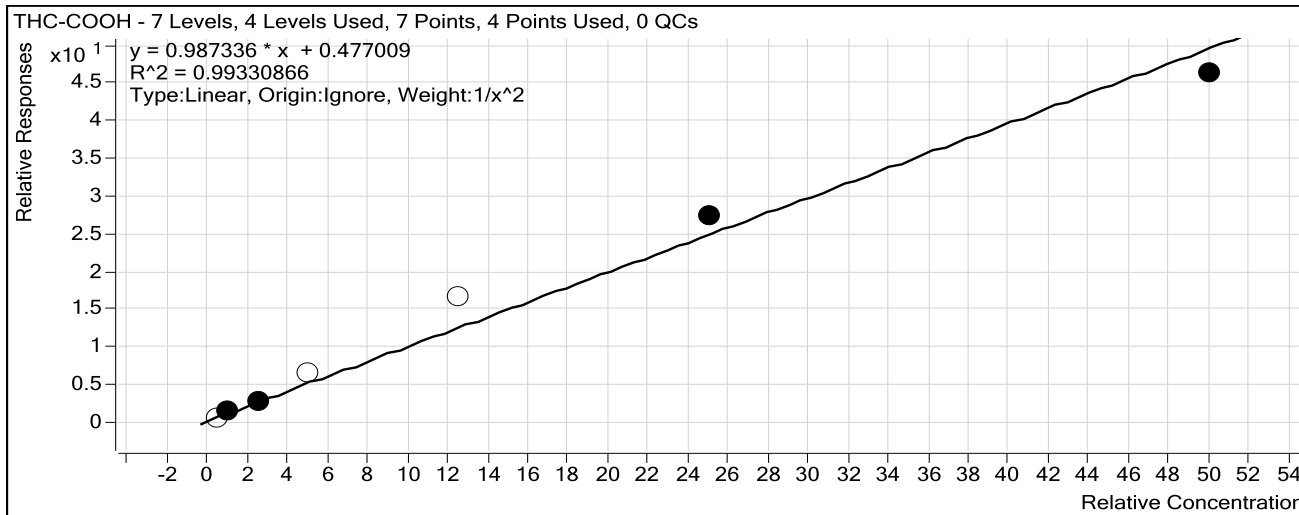
**Batch Data Path** C:\MassHunter\Data\CANN\CANN-092515-DD\QuantResults\CANN-092515-DD.batch.bin

**Last Calib Update** 10/1/2015 9:21 AM

**Analyst Name** ISP TOX

**Target Compound** *THC-COOH*

**Internal Standard** *THC-COOH-d3*



Sample	Level	Enabled	Exp Conc	Final Conc	Accuracy
Blood: 1_5 ng/mL	1	<input type="checkbox"/>	5	2.3	46.0
Blood: 2_10 ng/mL	2	<input checked="" type="checkbox"/>	10	10.1	100.9
Blood: 5_25 ng/mL	3	<input checked="" type="checkbox"/>	25	24.3	97.2
Blood: 10_50 ng/mL	4	<input type="checkbox"/>	50	60.8	121.5
Blood: 25_125 ng/mL	5	<input type="checkbox"/>	125	162.7	130.2
Blood: 50_250 ng/mL	6	<input checked="" type="checkbox"/>	250	272.9	109.2
Blood: 100_500 ng/mL	7	<input checked="" type="checkbox"/>	500	463.6	92.7

# ISP Forensics Calibration Curve Report



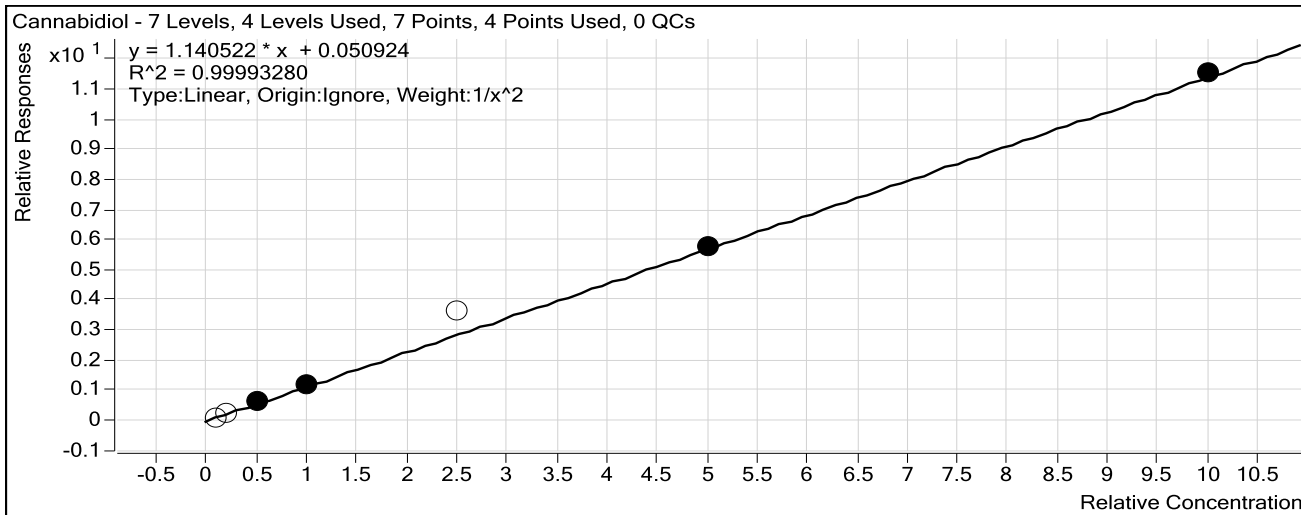
**Batch Data Path** C:\MassHunter\Data\CANN\CANN-092515-DD\QuantResults\CANN-092515-DD.batch.bin

**Last Calib Update** 10/1/2015 9:21 AM

**Analyst Name** ISP TOX

**Target Compound** *Cannabidiol*

**Internal Standard** *Cannabidiol-d3*



Sample	Level	Enabled	Exp Conc	Final Conc	Accuracy
Blood: 1_5 ng/mL	1	<input type="checkbox"/>	1	0.6	57.4
Blood: 2_10 ng/mL	2	<input type="checkbox"/>	2	1.9	93.5
Blood: 5_25 ng/mL	3	<input checked="" type="checkbox"/>	5	5.0	100.4
Blood: 10_50 ng/mL	4	<input checked="" type="checkbox"/>	10	9.9	99.1
Blood: 25_125 ng/mL	5	<input type="checkbox"/>	25	31.3	125.0
Blood: 50_250 ng/mL	6	<input checked="" type="checkbox"/>	50	50.0	100.0
Blood: 100_500 ng/mL	7	<input checked="" type="checkbox"/>	100	100.5	100.5



# ISP Forensics Calibration Curve Report



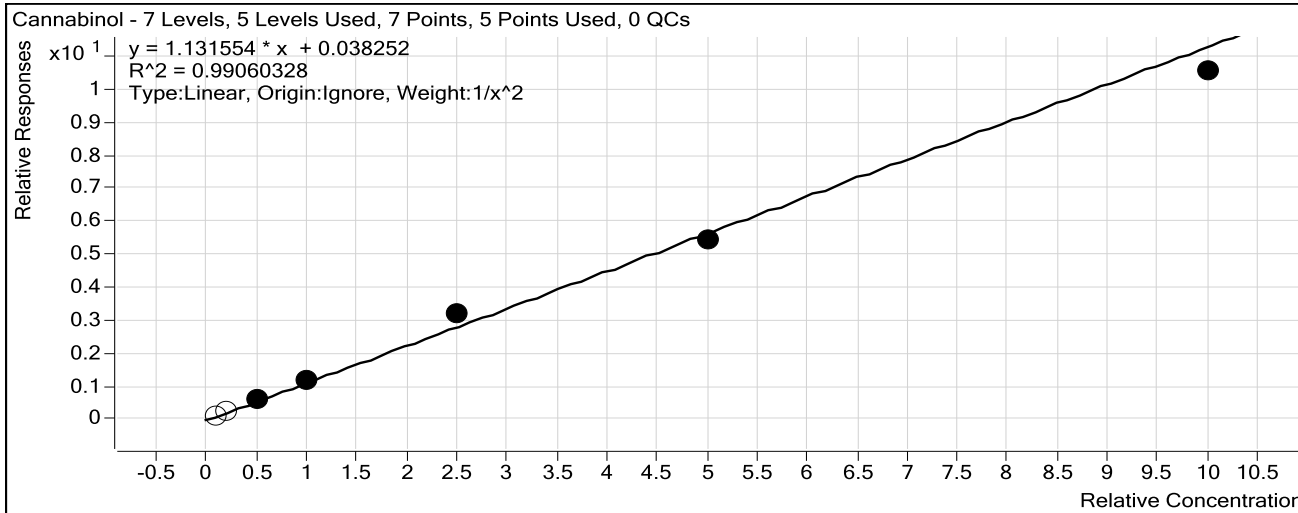
**Batch Data Path** C:\MassHunter\Data\CANN\CANN-092515-DD\QuantResults\CANN-092515-DD.batch.bin

**Last Calib Update** 10/1/2015 9:21 AM

**Analyst Name** ISP TOX

**Target Compound** *Cannabinol*

**Internal Standard** *Cannabinol-d3*



Sample	Level	Enabled	Exp Conc	Final Conc	Accuracy
Blood: 1_5 ng/mL	1	<input type="checkbox"/>	1	0.9	88.1
Blood: 2_10 ng/mL	2	<input type="checkbox"/>	2	1.9	96.4
Blood: 5_25 ng/mL	3	<input checked="" type="checkbox"/>	5	4.9	97.2
Blood: 10_50 ng/mL	4	<input checked="" type="checkbox"/>	10	10.2	102.4
Blood: 25_125 ng/mL	5	<input checked="" type="checkbox"/>	25	28.0	111.9
Blood: 50_250 ng/mL	6	<input checked="" type="checkbox"/>	50	47.9	95.8
Blood: 100_500 ng/mL	7	<input checked="" type="checkbox"/>	100	92.8	92.8

# ISP Forensics Calibration Curve Report

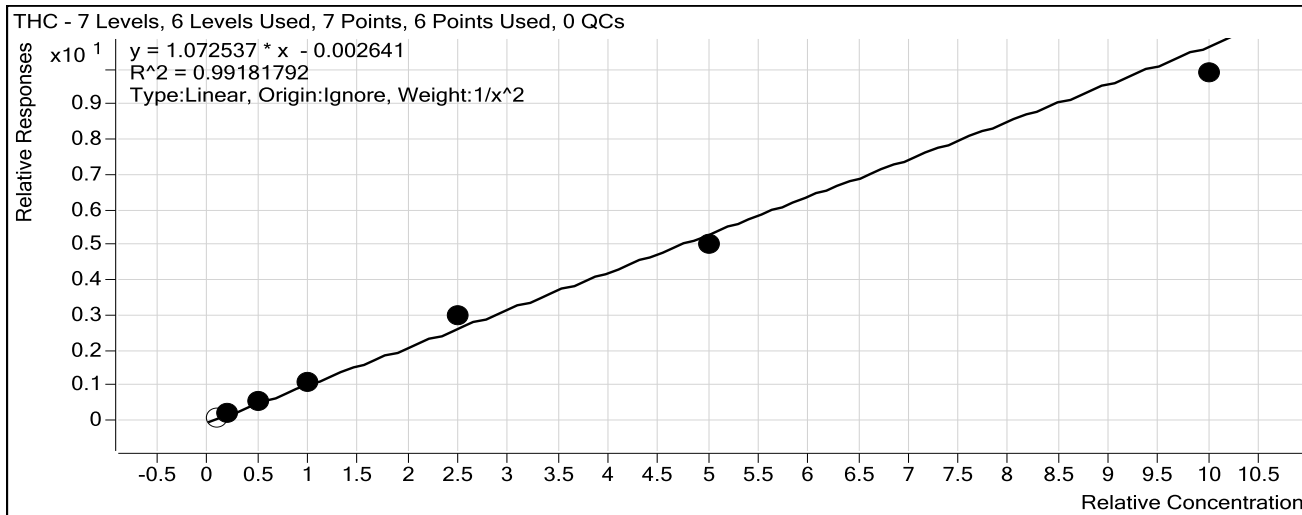


**Batch Data Path** C:\MassHunter\Data\CANN\CANN-092515-DD\QuantResults\CANN-092515-DD.batch.bin

**Last Calib Update** 10/1/2015 9:21 AM

**Analyst Name** ISP TOX

**Target Compound** *THC*  
**Internal Standard** *THC-d3*



Sample	Level	Enabled	Exp Conc	Final Conc	Accuracy
Blood: 1_5 ng/mL	1	<input type="checkbox"/>	1	0.9	94.9
Blood: 2_10 ng/mL	2	<input checked="" type="checkbox"/>	2	1.9	97.3
Blood: 5_25 ng/mL	3	<input checked="" type="checkbox"/>	5	5.3	105.7
Blood: 10_50 ng/mL	4	<input checked="" type="checkbox"/>	10	10.0	99.5
Blood: 25_125 ng/mL	5	<input checked="" type="checkbox"/>	25	28.0	111.9
Blood: 50_250 ng/mL	6	<input checked="" type="checkbox"/>	50	46.7	93.4
Blood: 100_500 ng/mL	7	<input checked="" type="checkbox"/>	100	92.1	92.1

**ISP FORENSICS**  
**Pocatello**  
**Cannabinoid Analysis Report**

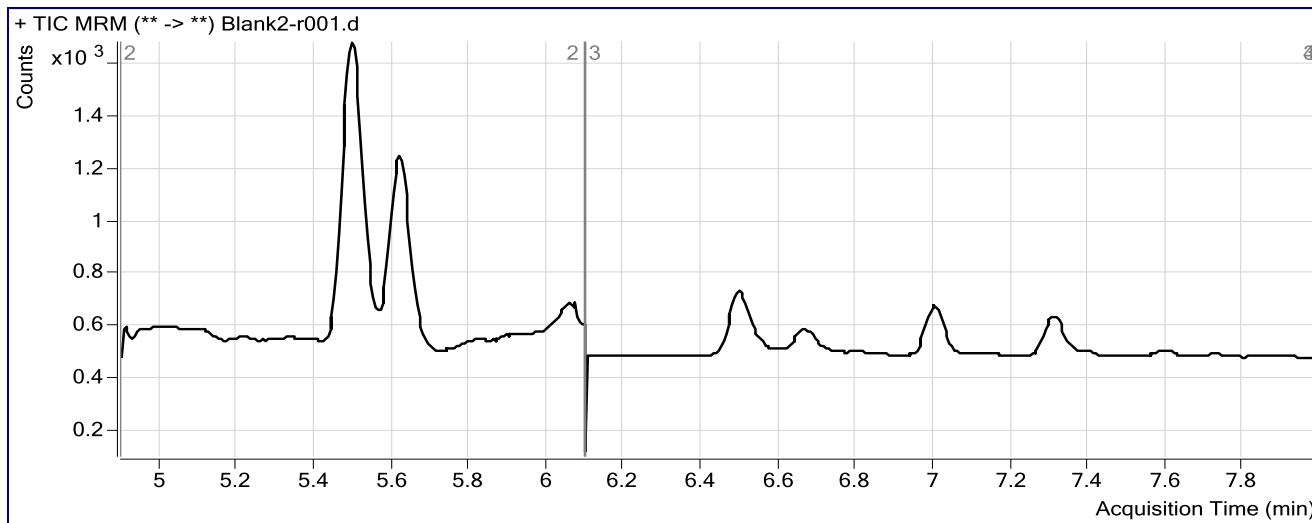


<b>Batch Data Path</b>	C:\MassHunter\Data\CANN\CANN-092515-DD\QuantResults\CANN-092515-DD.batch.bin		
<b>Analysis Time</b>	10/1/2015 9:21 AM	<b>Analyst Name</b>	ISPUser
<b>Report Time</b>	10/1/2015 9:23 AM	<b>Reporter Name</b>	ISPUser
<b>Last Calib Update</b>	10/1/2015 9:21 AM	<b>Batch State</b>	Processed

**Analysis Info**

<b>Acq Time</b>	2015-09-26 08:42	<b>Data File</b>	Blank2-r001.d
<b>Sample Type</b>	Blank	<b>Sample Name</b>	Blank
<b>Dilution</b>	1	<b>Acq Method</b>	isp blood cannabinoids.m
<b>Position</b>	P1-A1	<b>Sample Info</b>	
<b>Inj Vol</b>	-1	<b>Comment</b>	

**Sample Chromatogram**



# ISP FORENSICS

## Pocatello

### Cannabinoid Analysis Report

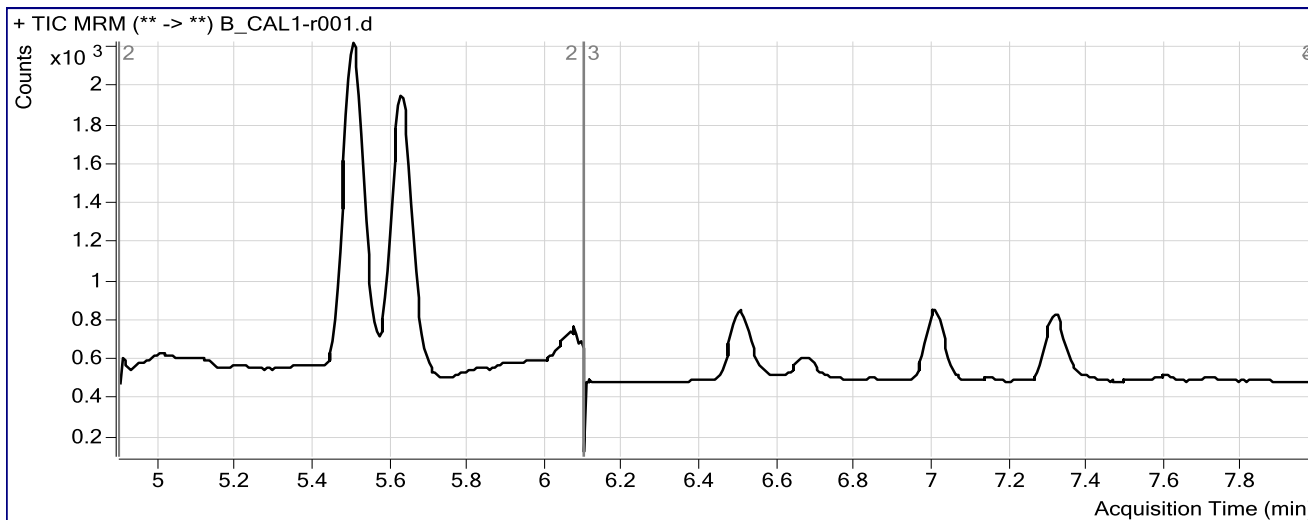


**Batch Data Path** C:\MassHunter\Data\CANN\CANN-092515-DD\QuantResults\CANN-092515-DD.batch.bin  
**Analysis Time** 10/1/2015 9:21 AM **Analyst Name** ISPUser  
**Report Time** 10/1/2015 9:23 AM **Reporter Name** ISPUser  
**Last Calib Update** 10/1/2015 9:21 AM **Batch State** Processed

#### Analysis Info

**Acq Time** 2015-09-26 08:55 **Data File** B\_CAL1-r001.d  
**Sample Type** Calibration **Sample Name** Blood: 1\_5 ng/mL  
**Dilution** 1 **Acq Method** isp blood cannabinoids.m  
**Position** P1-A2 **Sample Info** c-THC @5ng/mL, all others @1 ng/mL  
**Inj Vol** -1 **Comment**

#### Sample Chromatogram



#### Results

Compound	ISTD Compound	RT	Response	ISTD Resp	Resp Ratio	Final Conc
OH-THC	OH-THC-d3	5.515	693	4316	0.1604	1.0111
THC-COOH	THC-COOH-d3	5.630	797	1132	0.7041	2.2996
Cannabidiol	Cannabidiol-d3	6.505	57	486	0.1164	0.5738
Cannabinol	Cannabinol-d3	7.012	122	882	0.1380	0.8813
THC	THC-d3	7.317	51	514	0.0991	0.9490

# ISP FORENSICS

## Pocatello

### Cannabinoid Analysis Report

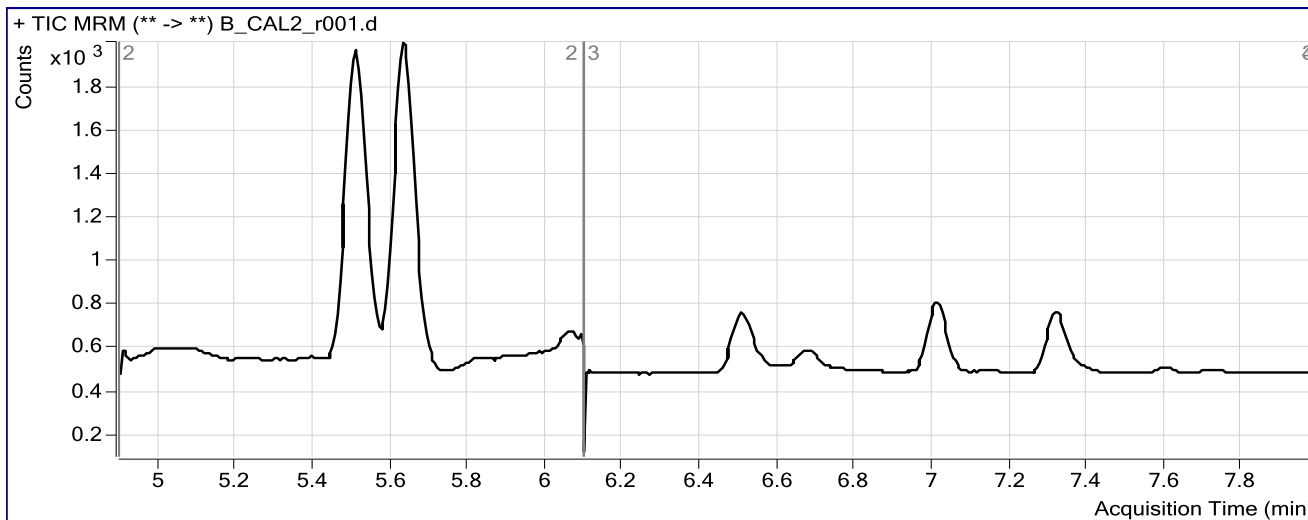


**Batch Data Path** C:\MassHunter\Data\CANN\CANN-092515-DD\QuantResults\CANN-092515-DD.batch.bin  
**Analysis Time** 10/1/2015 9:21 AM **Analyst Name** ISPUser  
**Report Time** 10/1/2015 9:23 AM **Reporter Name** ISPUser  
**Last Calib Update** 10/1/2015 9:21 AM **Batch State** Processed

#### Analysis Info

**Acq Time** 2015-09-26 09:08 **Data File** B\_CAL2\_r001.d  
**Sample Type** Calibration **Sample Name** Blood: 2\_10 ng/mL  
**Dilution** 1 **Acq Method** isp blood cannabinoids.m  
**Position** P1-A3 **Sample Info** c-THC @10ng/mL, all others @2 ng/mL  
**Inj Vol** -1 **Comment**

#### Sample Chromatogram



#### Results

Compound	ISTD Compound	RT	Response	ISTD Resp	Resp Ratio	Final Conc
OH-THC	OH-THC-d3	5.521	984	3329	0.2956	1.9657
THC-COOH	THC-COOH-d3	5.635	1245	845	1.4732	10.0896
Cannabidiol	Cannabidiol-d3	6.510	77	292	0.2641	1.8695
Cannabinol	Cannabinol-d3	7.018	180	701	0.2564	1.9276
THC	THC-d3	7.317	75	363	0.2060	1.9456

# ISP FORENSICS

## Pocatello

### Cannabinoid Analysis Report

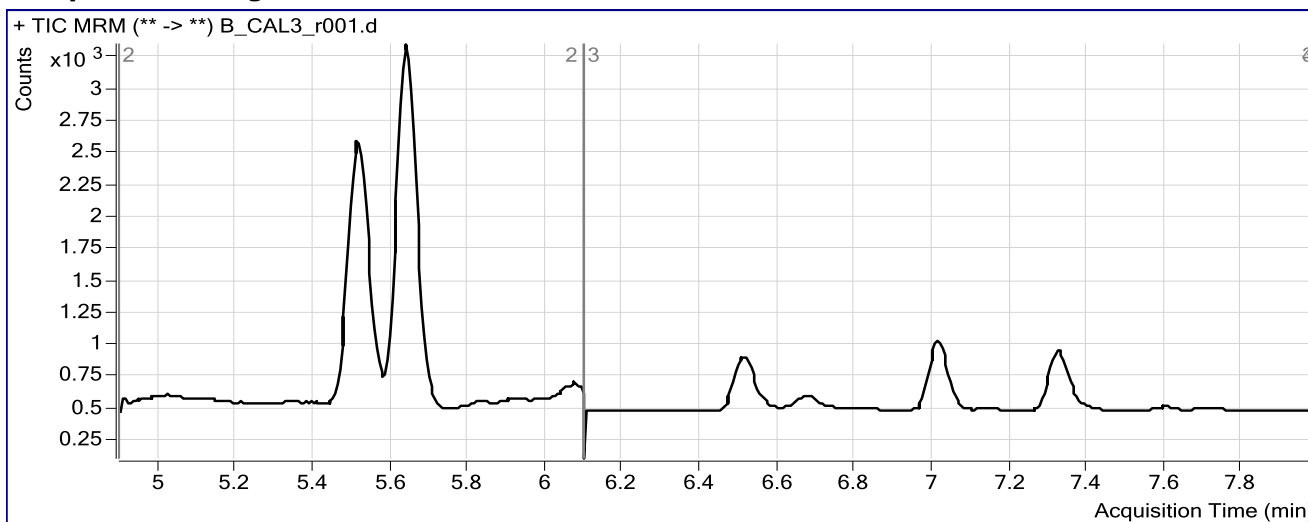


**Batch Data Path** C:\MassHunter\Data\CANN\CANN-092515-DD\QuantResults\CANN-092515-DD.batch.bin  
**Analysis Time** 10/1/2015 9:21 AM **Analyst Name** ISPUser  
**Report Time** 10/1/2015 9:23 AM **Reporter Name** ISPUser  
**Last Calib Update** 10/1/2015 9:21 AM **Batch State** Processed

#### Analysis Info

**Acq Time** 2015-09-26 09:21 **Data File** B\_CAL3\_r001.d  
**Sample Type** Calibration **Sample Name** Blood: 5\_25 ng/mL  
**Dilution** 1 **Acq Method** isp blood cannabinoids.m  
**Position** P1-A4 **Sample Info** c-THC @25ng/mL, all others @5 ng/mL  
**Inj Vol** -1 **Comment**

#### Sample Chromatogram



#### Results

Compound	ISTD Compound	RT	Response	ISTD Resp	Resp Ratio	Final Conc
OH-THC	OH-THC-d3	5.526	2566	3558	0.7213	4.9730
THC-COOH	THC-COOH-d3	5.641	2780	967	2.8764	24.3013
Cannabidiol	Cannabidiol-d3	6.516	223	358	0.6236	5.0212
Cannabinol	Cannabinol-d3	7.018	540	917	0.5883	4.8614
THC	THC-d3	7.323	276	490	0.5642	5.2852

# ISP FORENSICS

## Pocatello

### Cannabinoid Analysis Report

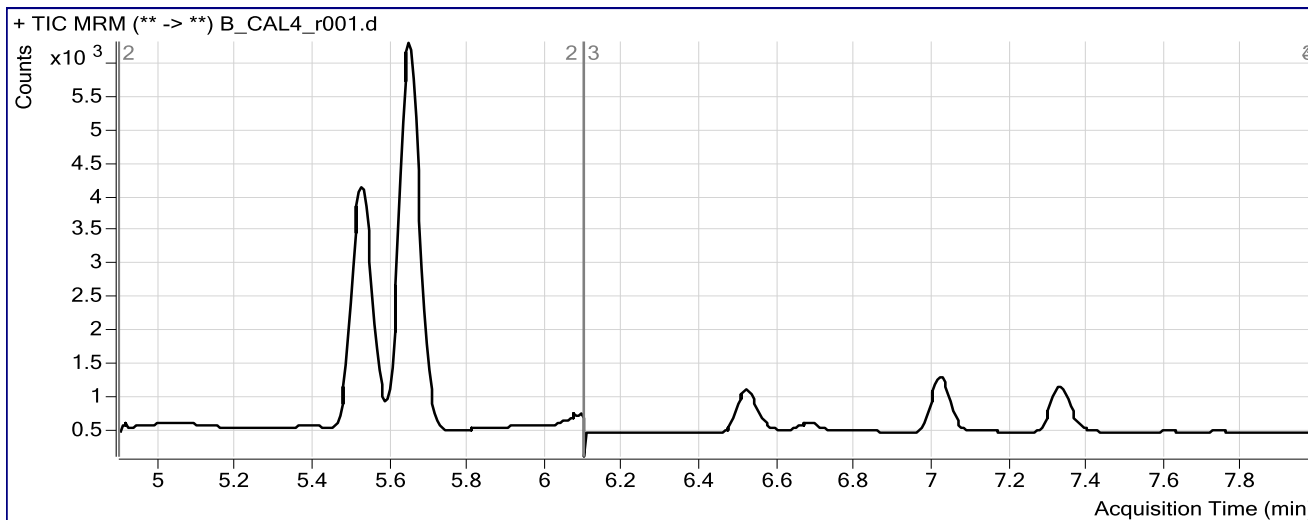


<b>Batch Data Path</b>	C:\MassHunter\Data\CANN\CANN-092515-DD\QuantResults\CANN-092515-DD.batch.bin		
<b>Analysis Time</b>	10/1/2015 9:21 AM	<b>Analyst Name</b>	ISPUser
<b>Report Time</b>	10/1/2015 9:23 AM	<b>Reporter Name</b>	ISPUser
<b>Last Calib Update</b>	10/1/2015 9:21 AM	<b>Batch State</b>	Processed

#### Analysis Info

<b>Acq Time</b>	2015-09-26 09:34	<b>Data File</b>	B_CAL4_r001.d
<b>Sample Type</b>	Calibration	<b>Sample Name</b>	Blood: 10_50 ng/mL
<b>Dilution</b>	1	<b>Acq Method</b>	isp blood cannabinoids.m
<b>Position</b>	P1-A5	<b>Sample Info</b>	c-THC @50ng/mL, all others @10 ng/mL
<b>Inj Vol</b>	-1	<b>Comment</b>	

#### Sample Chromatogram



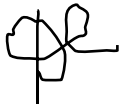
#### Results

Compound	ISTD Compound	RT	Response	ISTD Resp	Resp Ratio	Final Conc
OH-THC	OH-THC-d3	5.532	6515	4221	1.5433	10.7807
THC-COOH	THC-COOH-d3	5.647	6858	1059	6.4768	60.7677
Cannabidiol	Cannabidiol-d3	6.522	456	386	1.1813	9.9111
Cannabinol	Cannabinol-d3	7.023	1159	969	1.1965	10.2362
THC	THC-d3	7.328	547	513	1.0648	9.9527

# ISP FORENSICS

## Pocatello

### Cannabinoid Analysis Report

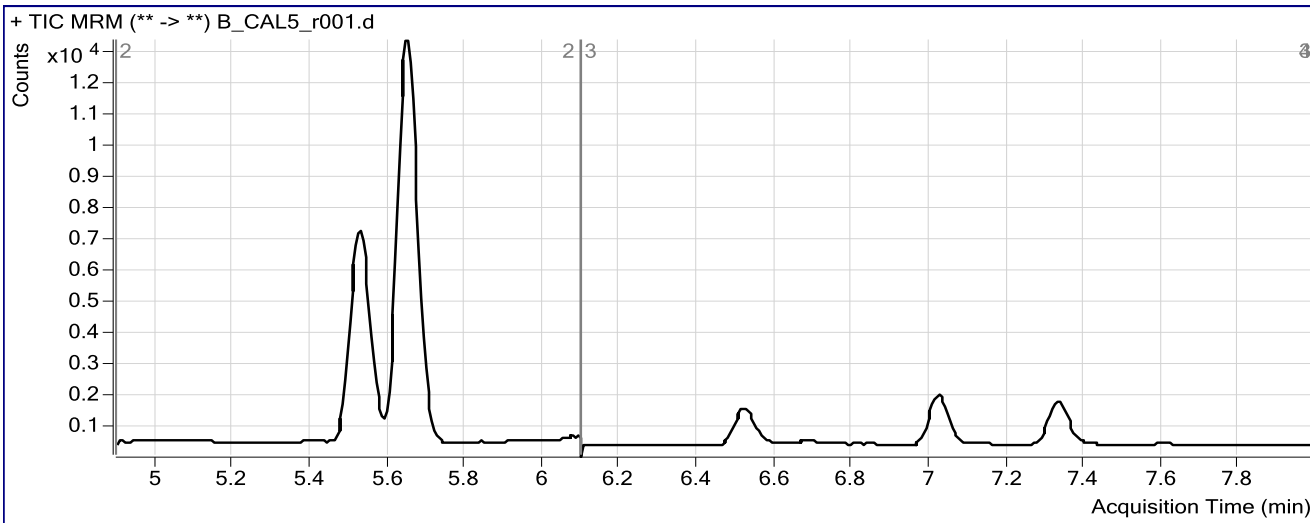


<b>Batch Data Path</b>	C:\MassHunter\Data\CANN\CANN-092515-DD\QuantResults\CANN-092515-DD.batch.bin		
<b>Analysis Time</b>	10/1/2015 9:21 AM	<b>Analyst Name</b>	ISPUser
<b>Report Time</b>	10/1/2015 9:23 AM	<b>Reporter Name</b>	ISPUser
<b>Last Calib Update</b>	10/1/2015 9:21 AM	<b>Batch State</b>	Processed

#### Analysis Info

<b>Acq Time</b>	2015-09-26 09:47	<b>Data File</b>	B_CAL5_r001.d
<b>Sample Type</b>	Calibration	<b>Sample Name</b>	Blood: 25_125 ng/mL
<b>Dilution</b>	1	<b>Acq Method</b>	isp blood cannabinoids.m
<b>Position</b>	P1-A6	<b>Sample Info</b>	c-THC @125ng/mL, all others @25 ng/mL
<b>Inj Vol</b>	-1	<b>Comment</b>	

#### Sample Chromatogram



#### Results

Compound	ISTD Compound	RT	Response	ISTD Resp	Resp Ratio	Final Conc
OH-THC	OH-THC-d3	5.532	15628	3977	3.9297	27.6391
THC-COOH	THC-COOH-d3	5.652	16737	1012	16.5406	162.6958 *
Cannabidiol	Cannabidiol-d3	6.522	1280	354	3.6163	31.2611 *
Cannabinol	Cannabinol-d3	7.023	2936	916	3.2035	27.9730
THC	THC-d3	7.328	1553	518	2.9991	27.9871

\*Outside 20% of expected value - still valid for qualitative use.



# ISP FORENSICS

## Pocatello

### Cannabinoid Analysis Report

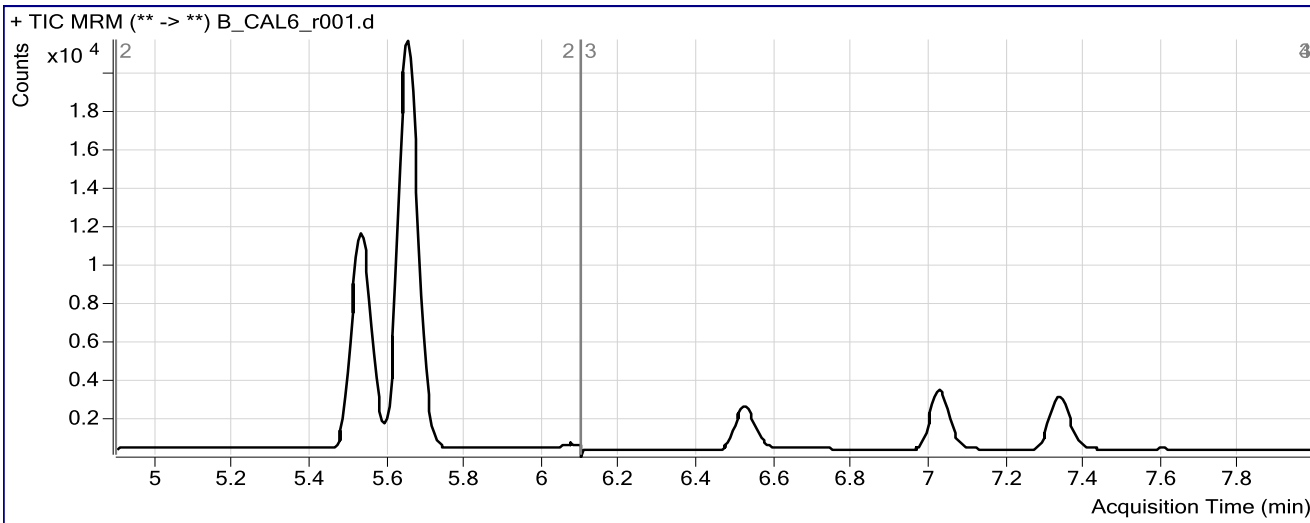


<b>Batch Data Path</b>	C:\MassHunter\Data\CANN\CANN-092515-DD\QuantResults\CANN-092515-DD.batch.bin		
<b>Analysis Time</b>	10/1/2015 9:21 AM	<b>Analyst Name</b>	ISPUser
<b>Report Time</b>	10/1/2015 9:23 AM	<b>Reporter Name</b>	ISPUser
<b>Last Calib Update</b>	10/1/2015 9:21 AM	<b>Batch State</b>	Processed

#### Analysis Info

<b>Acq Time</b>	2015-09-26 10:01	<b>Data File</b>	B_CAL6_r001.d
<b>Sample Type</b>	Calibration	<b>Sample Name</b>	Blood: 50_250 ng/mL
<b>Dilution</b>	1	<b>Acq Method</b>	isp blood cannabinoids.m
<b>Position</b>	P1-A7	<b>Sample Info</b>	c-THC @250ng/mL, all others @50 ng/mL
<b>Inj Vol</b>	-1	<b>Comment</b>	

#### Sample Chromatogram



#### Results

Compound	ISTD Compound	RT	Response	ISTD Resp	Resp Ratio	Final Conc
OH-THC	OH-THC-d3	5.532	28075	4280	6.5590	46.2139
THC-COOH	THC-COOH-d3	5.652	28217	1029	27.4262	272.9481
Cannabidiol	Cannabidiol-d3	6.522	2652	461	5.7507	49.9750
Cannabinol	Cannabinol-d3	7.023	6424	1177	5.4556	47.8753
THC	THC-d3	7.334	3399	679	5.0070	46.7080

# ISP FORENSICS

## Pocatello

### Cannabinoid Analysis Report

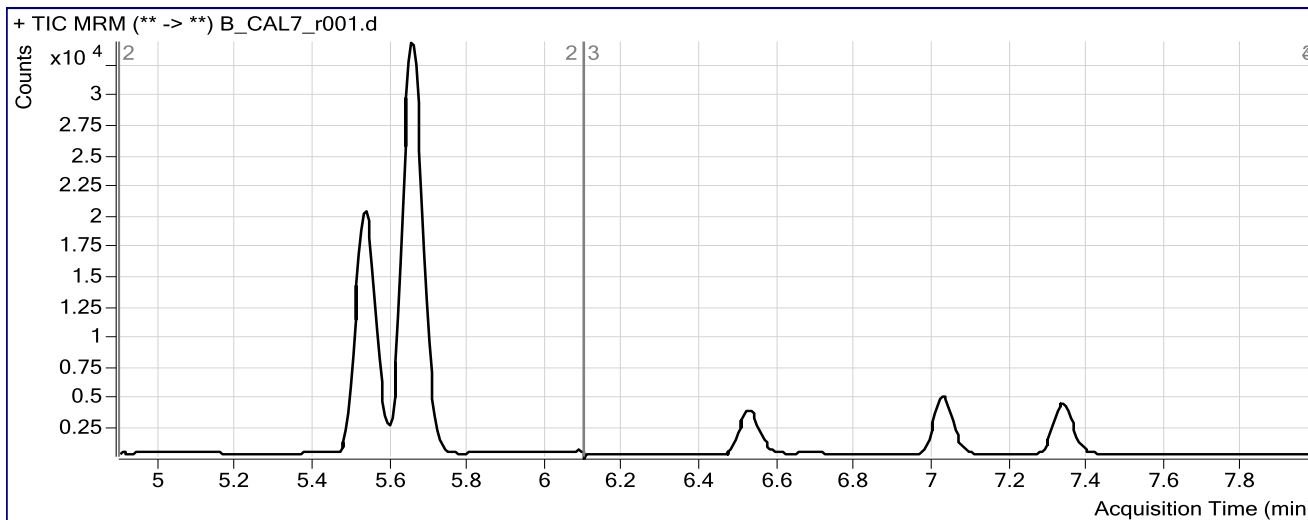


<b>Batch Data Path</b>	C:\MassHunter\Data\CANN\CANN-092515-DD\QuantResults\CANN-092515-DD.batch.bin		
<b>Analysis Time</b>	10/1/2015 9:21 AM	<b>Analyst Name</b>	ISPUser
<b>Report Time</b>	10/1/2015 9:23 AM	<b>Reporter Name</b>	ISPUser
<b>Last Calib Update</b>	10/1/2015 9:21 AM	<b>Batch State</b>	Processed

#### Analysis Info

<b>Acq Time</b>	2015-09-26 10:14	<b>Data File</b>	B_CAL7_r001.d
<b>Sample Type</b>	Calibration	<b>Sample Name</b>	Blood: 100_500 ng/mL
<b>Dilution</b>	1	<b>Acq Method</b>	isp blood cannabinoids.m
<b>Position</b>	P1-A8	<b>Sample Info</b>	c-THC @500ng/mL, all others @100 ng/mL
<b>Inj Vol</b>	-1	<b>Comment</b>	

#### Sample Chromatogram



#### Results

Compound	ISTD Compound	RT	Response	ISTD Resp	Resp Ratio	Final Conc
OH-THC	OH-THC-d3	5.537	53572	4132	12.9644	91.4655
THC-COOH	THC-COOH-d3	5.658	47181	1020	46.2496	463.5965
Cannabidiol	Cannabidiol-d3	6.522	4651	404	11.5149	100.5155
Cannabinol	Cannabinol-d3	7.029	10634	1009	10.5355	92.7685
THC	THC-d3	7.334	5417	548	9.8782	92.1261

**ISP FORENSICS**  
**Pocatello**  
**Cannabinoid Analysis Report**

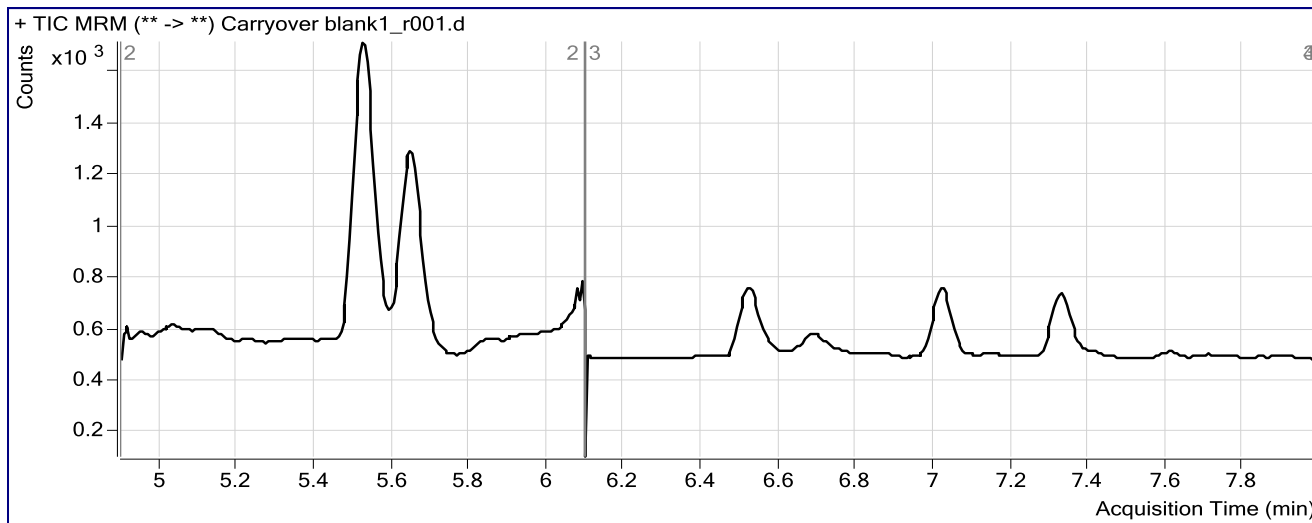


<b>Batch Data Path</b>	C:\MassHunter\Data\CANN\CANN-092515-DD\QuantResults\CANN-092515-DD.batch.bin		
<b>Analysis Time</b>	10/1/2015 9:21 AM	<b>Analyst Name</b>	ISPUser
<b>Report Time</b>	10/1/2015 9:23 AM	<b>Reporter Name</b>	ISPUser
<b>Last Calib Update</b>	10/1/2015 9:21 AM	<b>Batch State</b>	Processed

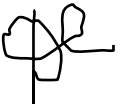
**Analysis Info**

<b>Acq Time</b>	2015-09-26 10:27	<b>Data File</b>	Carryover blank1_r001.d
<b>Sample Type</b>	Blank	<b>Sample Name</b>	Blank
<b>Dilution</b>	1	<b>Acq Method</b>	isp blood cannabinoids.m
<b>Position</b>	P1-A1	<b>Sample Info</b>	
<b>Inj Vol</b>	-1	<b>Comment</b>	

**Sample Chromatogram**



**ISP FORENSICS**  
**Pocatello**  
**Cannabinoid Analysis Report**

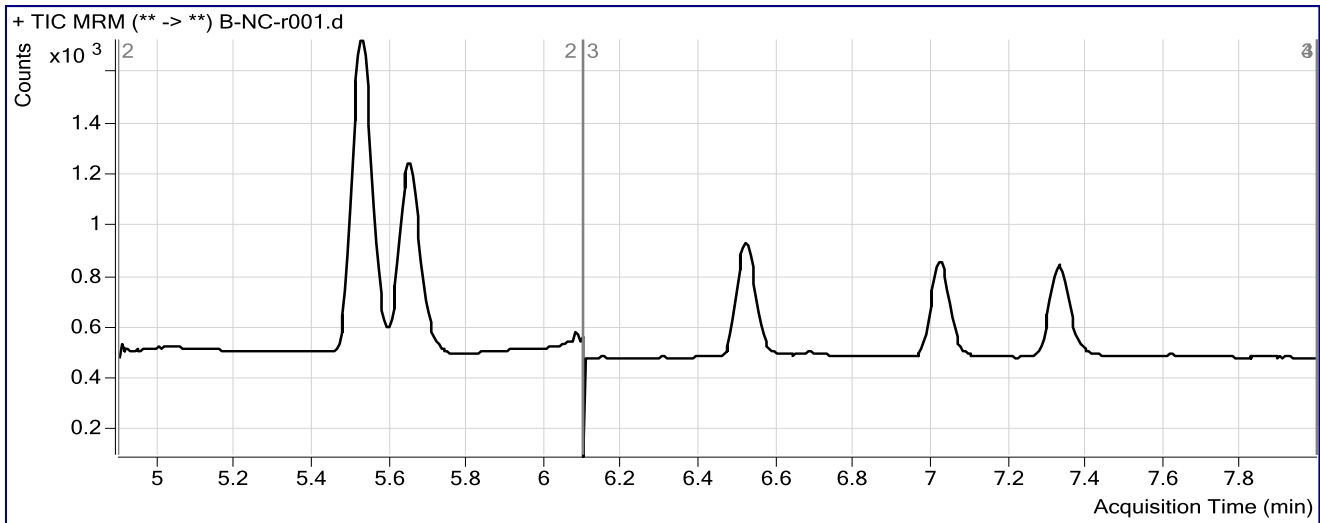


<b>Batch Data Path</b>	C:\MassHunter\Data\CANN\CANN-092515-DD\QuantResults\CANN-092515-DD.batch.bin		
<b>Analysis Time</b>	10/1/2015 9:21 AM	<b>Analyst Name</b>	ISPUser
<b>Report Time</b>	10/1/2015 9:23 AM	<b>Reporter Name</b>	ISPUser
<b>Last Calib Update</b>	10/1/2015 9:21 AM	<b>Batch State</b>	Processed

**Analysis Info**

<b>Acq Time</b>	2015-09-26 10:40	<b>Data File</b>	B-NC-r001.d
<b>Sample Type</b>	Sample	<b>Sample Name</b>	Blood Negative Control
<b>Dilution</b>	1	<b>Acq Method</b>	isp blood cannabinoids.m
<b>Position</b>	P1-A9	<b>Sample Info</b>	Negative Blood UTAK Lot B0689
<b>Inj Vol</b>	-1	<b>Comment</b>	

**Sample Chromatogram**



# ISP FORENSICS

## Pocatello

### Cannabinoid Analysis Report

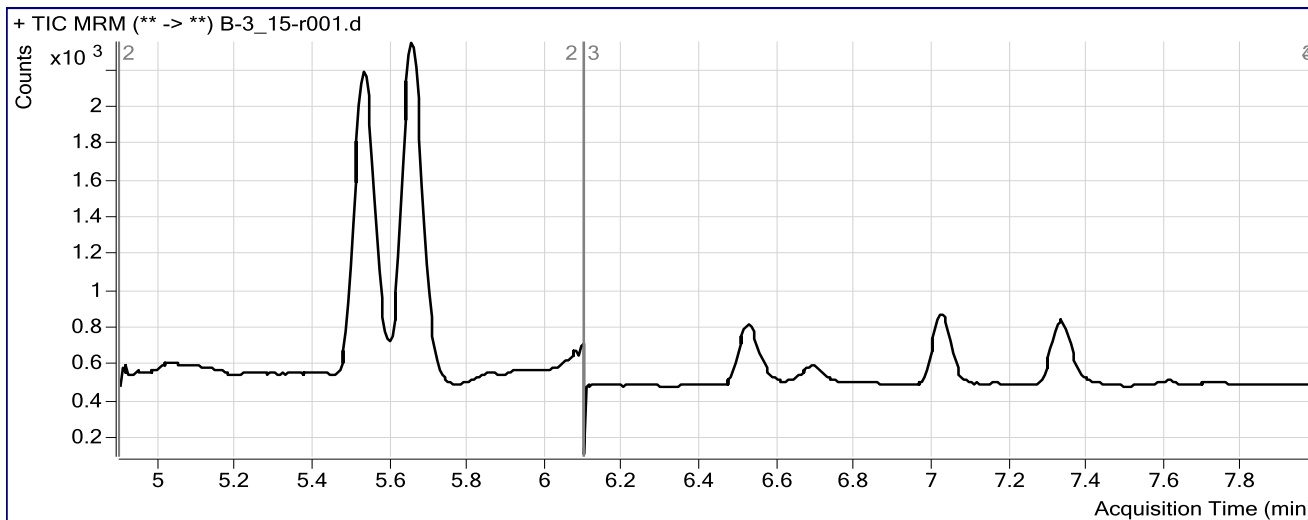


<b>Batch Data Path</b>	C:\MassHunter\Data\CANN\CANN-092515-DD\QuantResults\CANN-092515-DD.batch.bin		
<b>Analysis Time</b>	10/1/2015 9:21 AM	<b>Analyst Name</b>	ISPUser
<b>Report Time</b>	10/1/2015 9:23 AM	<b>Reporter Name</b>	ISPUser
<b>Last Calib Update</b>	10/1/2015 9:21 AM	<b>Batch State</b>	Processed

#### Analysis Info

<b>Acq Time</b>	2015-09-26 10:53	<b>Data File</b>	B-3_15-r001.d
<b>Sample Type</b>	Sample	<b>Sample Name</b>	Blood 3_15ng/mL
<b>Dilution</b>	1	<b>Acq Method</b>	isp blood cannabinoids.m
<b>Position</b>	P1-B1	<b>Sample Info</b>	c-THC @15ng/mL, all others @3 ng/mL
<b>Inj Vol</b>	-1	<b>Comment</b>	

#### Sample Chromatogram



#### Results

Compound	ISTD Compound	RT	Response	ISTD Resp	Resp Ratio	Final Conc
OH-THC	OH-THC-d3	5.537	1744	3081	0.5660	3.8762 *
THC-COOH	THC-COOH-d3	5.658	1810	820	2.2074	17.5261
Cannabidiol	Cannabidiol-d3	6.527	142	335	0.4246	3.2766 *
Cannabinol	Cannabinol-d3	7.029	315	722	0.4367	3.5213 *
THC	THC-d3	7.334	163	406	0.4019	3.7721

\*Below LOD - none detected.

**ISP FORENSICS**  
**Pocatello**  
**Cannabinoid Analysis Report**

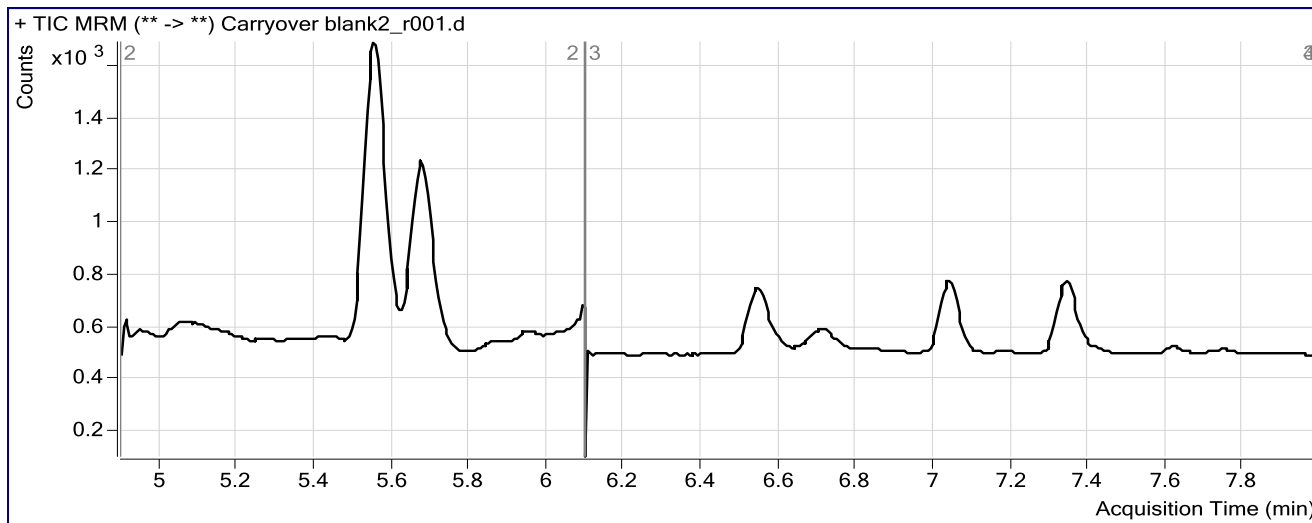


<b>Batch Data Path</b>	C:\MassHunter\Data\CANN\CANN-092515-DD\QuantResults\CANN-092515-DD.batch.bin		
<b>Analysis Time</b>	10/1/2015 9:21 AM	<b>Analyst Name</b>	ISPUser
<b>Report Time</b>	10/1/2015 9:23 AM	<b>Reporter Name</b>	ISPUser
<b>Last Calib Update</b>	10/1/2015 9:21 AM	<b>Batch State</b>	Processed

**Analysis Info**

<b>Acq Time</b>	2015-09-26 15:30	<b>Data File</b>	Carryover blank2_r001.d
<b>Sample Type</b>	Blank	<b>Sample Name</b>	Blank
<b>Dilution</b>	1	<b>Acq Method</b>	isp blood cannabinoids.m
<b>Position</b>	P1-A1	<b>Sample Info</b>	
<b>Inj Vol</b>	-1	<b>Comment</b>	

**Sample Chromatogram**



# ISP FORENSICS

## Pocatello

### Cannabinoid Analysis Report

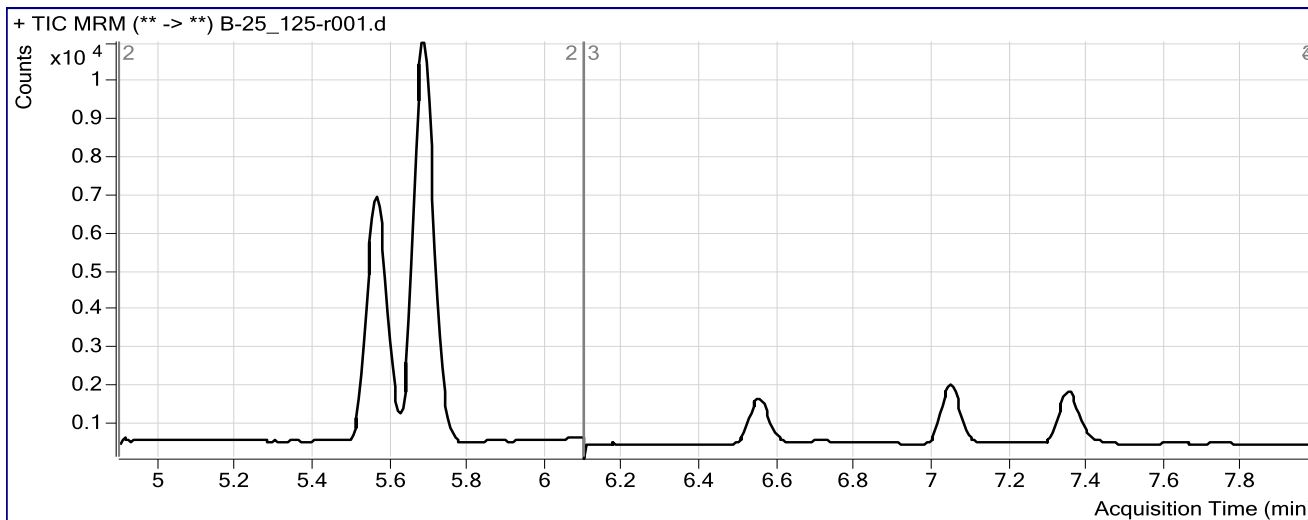


**Batch Data Path** C:\MassHunter\Data\CANN\CANN-092515-DD\QuantResults\CANN-092515-DD.batch.bin  
**Analysis Time** 10/1/2015 9:21 AM **Analyst Name** ISPUser  
**Report Time** 10/1/2015 9:23 AM **Reporter Name** ISPUser  
**Last Calib Update** 10/1/2015 9:21 AM **Batch State** Processed

#### Analysis Info

**Acq Time** 2015-09-26 15:43 **Data File** B-25\_125-r001.d  
**Sample Type** Sample **Sample Name** Blood 25\_125ngmL  
**Dilution** 1 **Acq Method** isp blood cannabinoids.m  
**Position** P1-C3 **Sample Info** c-THC @125ng/mL, all others @25 ng/mL  
**Inj Vol** -1 **Comment**

#### Sample Chromatogram



#### Results

Compound	ISTD Compound	RT	Response	ISTD Resp	Resp Ratio	Final Conc
OH-THC	OH-THC-d3	5.565	15141	3420	4.4272	31.1541
THC-COOH	THC-COOH-d3	5.686	13762	925	14.8713	145.7894
Cannabidiol	Cannabidiol-d3	6.550	1254	382	3.2815	28.3250
Cannabinol	Cannabinol-d3	7.046	2849	876	3.2526	28.4067
THC	THC-d3	7.351	1586	502	3.1611	29.4975

**ISP FORENSICS**  
**Pocatello**  
**Cannabinoid Analysis Report**

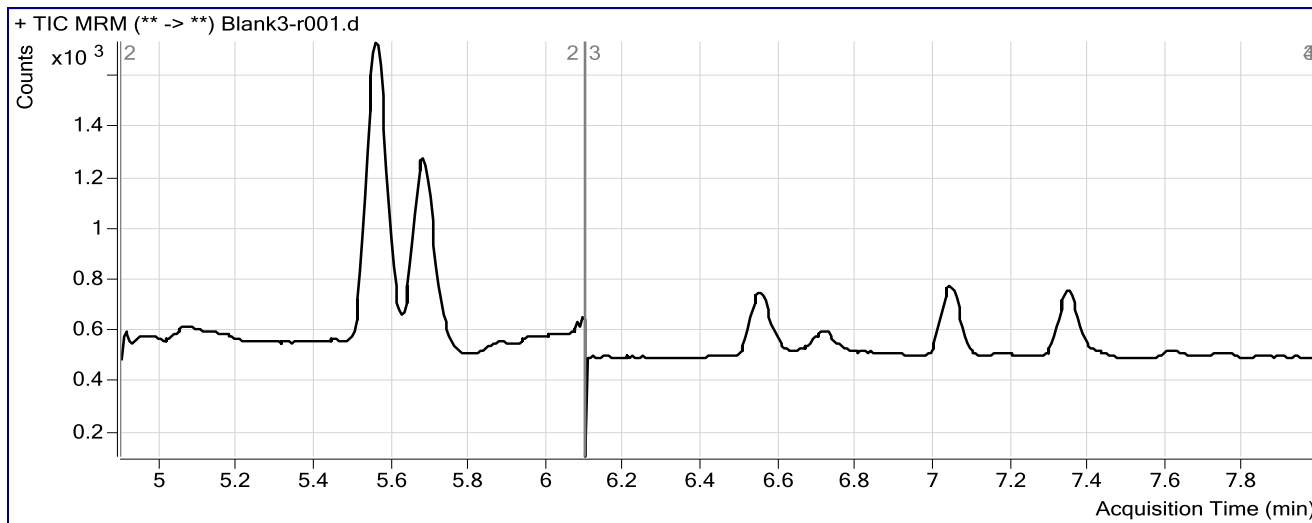


<b>Batch Data Path</b>	C:\MassHunter\Data\CANN\CANN-092515-DD\QuantResults\CANN-092515-DD.batch.bin		
<b>Analysis Time</b>	10/1/2015 9:21 AM	<b>Analyst Name</b>	ISPUser
<b>Report Time</b>	10/1/2015 9:23 AM	<b>Reporter Name</b>	ISPUser
<b>Last Calib Update</b>	10/1/2015 9:21 AM	<b>Batch State</b>	Processed

**Analysis Info**

<b>Acq Time</b>	2015-09-26 17:15	<b>Data File</b>	Blank3-r001.d
<b>Sample Type</b>	Blank	<b>Sample Name</b>	Blank
<b>Dilution</b>	1	<b>Acq Method</b>	isp blood cannabinoids.m
<b>Position</b>	P1-A1	<b>Sample Info</b>	
<b>Inj Vol</b>	-1	<b>Comment</b>	

**Sample Chromatogram**





**ISP FORENSICS**  
**Pocatello**  
**Cannabinoid Analysis Report**



<b>Batch Data Path</b>	C:\MassHunter\Data\CANN\CANN-092515-DD\QuantResults\CANN-092515-DD.batch.bin		
<b>Analysis Time</b>	10/1/2015 9:21 AM	<b>Analyst Name</b>	ISPUser
<b>Report Time</b>	10/1/2015 9:23 AM	<b>Reporter Name</b>	ISPUser
<b>Last Calib Update</b>	10/1/2015 9:21 AM	<b>Batch State</b>	Processed

**Analysis Info**

<b>Acq Time</b>	2015-09-26 17:28	<b>Data File</b>	Blank4-r001.d
<b>Sample Type</b>	Blank	<b>Sample Name</b>	Blank
<b>Dilution</b>	1	<b>Acq Method</b>	isp blood cannabinoids.m
<b>Position</b>	P1-A1	<b>Sample Info</b>	
<b>Inj Vol</b>	-1	<b>Comment</b>	

**Sample Chromatogram**

